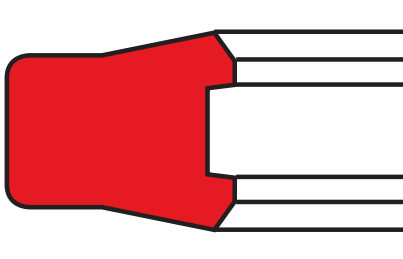


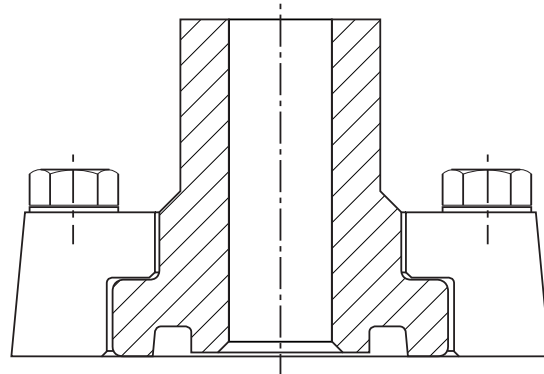
## static seal ST61

## seal spec



### description

flanges to the SAE J518 (as figure below) standard are among the most widely used static connections for high volume flows. they are functionally reliable and simple to assemble and dismantle. the individual elements for sealing these flanges can be nitrile O-Rings, nitrile rectangular rings (R14 or ST08), or polyurethane compact sealing rings (ST61), specially developed for mobile hydraulic systems.



### application



### category of profile

machined or molded/standard/trade product.

### application

media: HL and HLP hydraulic fluids

- mobile hydraulics
- injection moulding machines
- machine tools
- presses
- excavators
- agricultural machines

### advantages

- good abrasion resistance
- usable for rough surface finish
- the sealing edge offers a very good sealing function
- very high resistance to extrusion
- low compression set

### operating parameters & materials

| material               | temperature        | max. pressure <sup>1</sup> |
|------------------------|--------------------|----------------------------|
| s-mart PU (93 Shore A) | -35 °C ... +110 °C | 420 bar (42 MPa)           |

the stated operation conditions represent general indications. it is recommended not to use all maximum values simultaneously. surface speed limits apply only to the presence of adequate lubrication film.

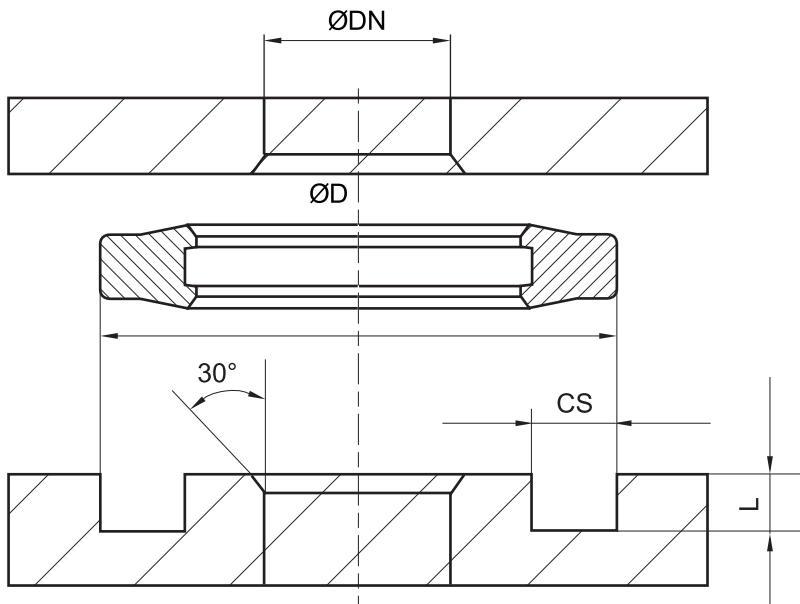
### installation SAE recommendations

| nominal flange size | Ø DN | ØD            |      | cs          |      | L           | H   |
|---------------------|------|---------------|------|-------------|------|-------------|-----|
|                     |      | min - max     | seal | min - max   | seal | min - max   |     |
| 1/2"                | 13   | 25.40 - 25.83 | 25.6 | 3.94 - 4.45 | 3.8  | 2.79 - 2.92 | 3.4 |
| 3/4"                | 19   | 31.75 - 31.88 | 31.8 | 3.94 - 4.45 | 3.8  | 2.79 - 2.92 | 3.4 |
| 1"                  | 25   | 39.62 - 39.75 | 39.8 | 3.94 - 4.45 | 3.8  | 2.79 - 2.92 | 3.4 |
| 1 1/4"              | 32   | 44.45 - 44.58 | 44.8 | 3.94 - 4.45 | 3.8  | 2.79 - 2.92 | 3.4 |
| 1 1/2"              | 38   | 53.72 - 53.98 | 54.3 | 3.94 - 4.45 | 3.8  | 2.79 - 2.92 | 3.4 |
| 2"                  | 51   | 63.25 - 63.50 | 63.8 | 3.94 - 4.45 | 3.8  | 2.79 - 2.92 | 3.4 |



**seal & housing recommendations**

*please note that we are able to produce those profiles to your specific need or any non standard housing. for detail measurements, please see seal-mart catalog...*



*don't hesitate to contact our technical department for further information or for special requirements (temperature, speed etc.), so that suitable materials and/or designs can be recommended.*